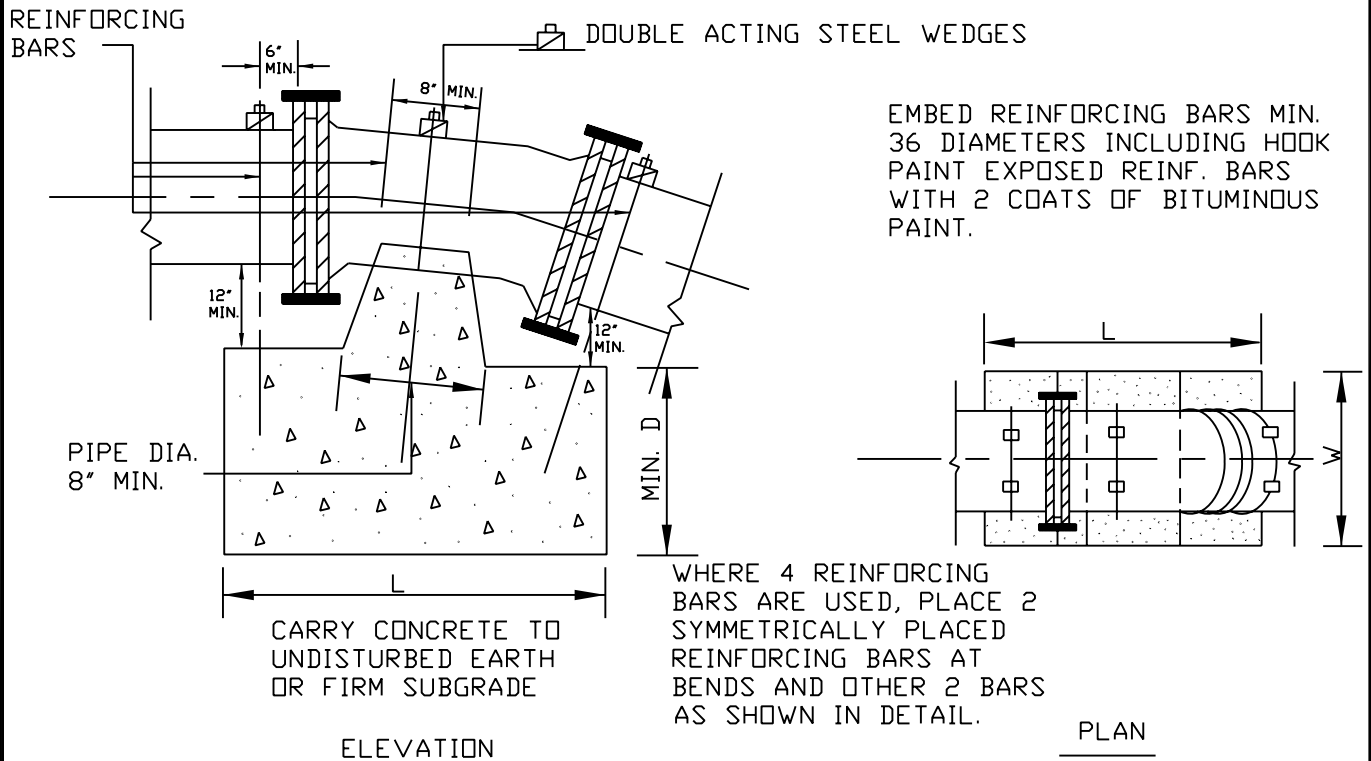


NOTES:
SEE APPLICABLE NOTES
AS SHOWN ON BLK-1.



EMBED REINFORCING BARS MIN. 3/8" DIAMETERS INCLUDING HOOK PAINT EXPOSED REINF. BARS WITH 2 COATS OF BITUMINOUS PAINT.

WHERE 4 REINFORCING BARS ARE USED, PLACE 2 SYMMETRICALLY PLACED REINFORCING BARS AT BENDS AND OTHER 2 BARS AS SHOWN IN DETAIL.

CARRY CONCRETE TO UNDISTURBED EARTH OR FIRM SUBGRADE

PIPE SIZE	11 1/4 BEND				22 1/2 BEND				45 BEND			
	L	W	D	REINF.BAR # & SIZE	L	W	D	REINF.BAR # & SIZE	L	W	D	REINF.BAR # & SIZE
6"	2'-0"	2'-0"	1'-6"	3 # 7	2'-6"	2'-6"	2'-0"	3 # 7	3'-0"	3'-0"	2'-0"	3 # 7
8"	2'-0"	2'-0"	2'-0"	3 # 8	2'-9"	2'-9"	2'-3"	3 # 8	3'-6"	3'-6"	2'-6"	3 # 8
10"	2'-3"	2'-3"	2'-0"	3 # 8	3'-6"	3'-6"	2'-3"	3 # 8	4'-0"	4'-0"	2'-9"	4 # 8
12"	2'-6"	2'-6"	2'-3"	3 # 8	4'-0"	4'-0"	2'-6"	4 # 8	4'-6"	4'-6"	3'-0"	4 # 8
16"	3'-3"	3'-3"	2'-6"	3 # 8	4'-6"	4'-6"	3'-0"	4 # 8	6'-0"	6'-0"	3'-6"	4 # 10
18"	4'-0"	4'-0"	2'-6"	3 # 10	5'-6"	5'-6"	3'-6"	3 # 10	7'-6"	7'-6"	4'-0"	4 # 10
20"	4'-0"	4'-0"	2'-6"	3 # 10	5'-6"	5'-6"	3'-6"	3 # 10	7'-6"	7'-6"	4'-0"	4 # 10
24"	4'-6"	4'-6"	3'-0"	3 # 10	6'-0"	6'-0"	4'-0"	4 # 10	8'-6"	8'-6"	4'-6"	4 # 10

NOTE: BLOCKING BASED ON PRESSURE OF 150 PSI AND ALLOWABLE SOIL BEARING CAPACITY OF 2000 PSF. CONCRETE TO BE 3000 PSI.