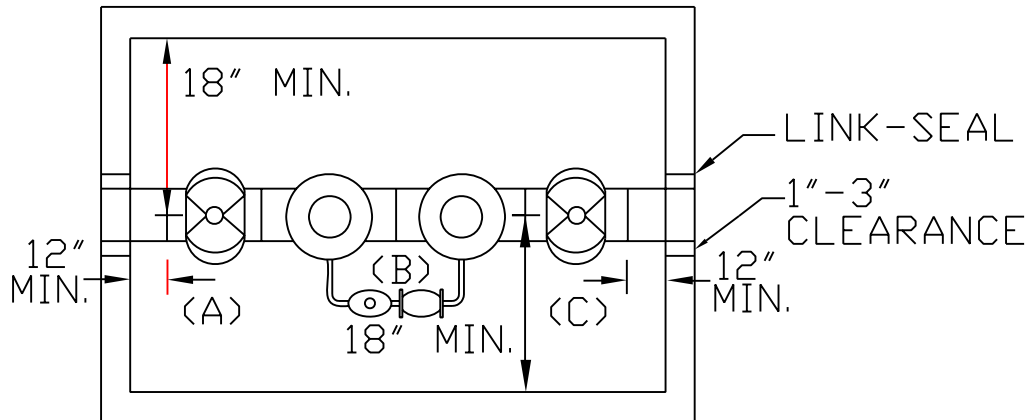


NOTES:

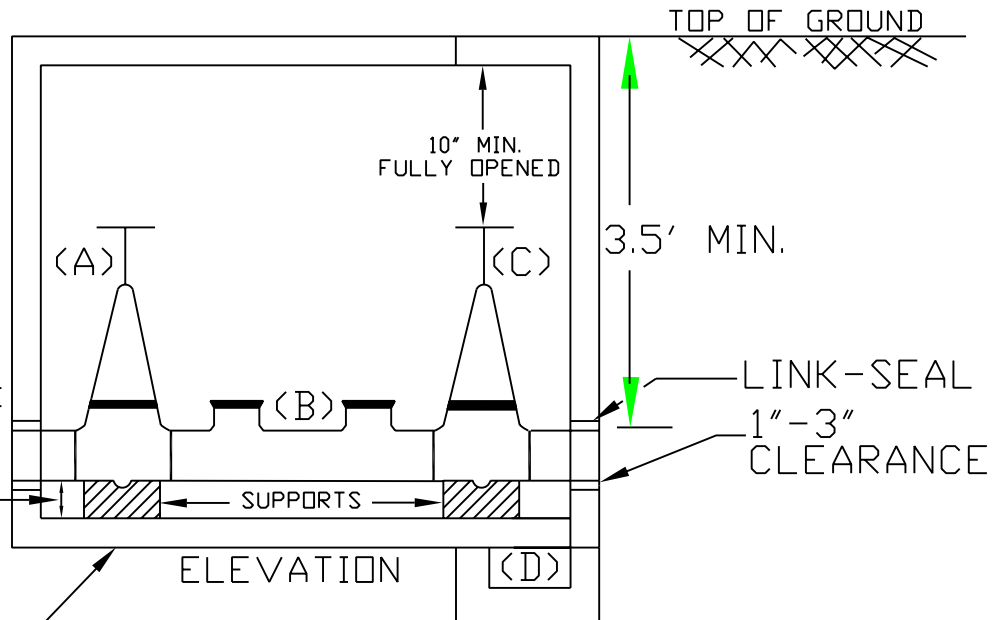
1. DOUBLE CHECK DEVICE SHALL BE INSTALLED IN A BOX AS NEAR TO THE WATER MAIN AS POSSIBLE WITHOUT PLACING BOX IN AREAS SUBJECT TO VEHICULAR TRAFFIC.
2. DOUBLE DETECTOR CHECK ASSEMBLY MUST BE U.L. LISTED OR F.M. APPROVED AND APPROVED BY HANOVER COUNTY'S DEPT. OF UTILITIES.



PLAN

- (A) OUTSIDE STEM AND YOKE GATE VALVE
 (B) DOUBLE DETECTOR CHECK VALVE ASSEMBLY
 (C) OUTSIDE STEM AND YOKE GATE VALVE
 (D) SUMP PUMP WHERE WATER TABLE IS A PROBLEM OR GRAVITY DRAIN WHERE WATER TABLE IS NOT

VAULT SHALL BE AS MANUFACTURED BY CARSON-BROOKS PLASTICS, LTD. (MODEL #2436-31 3/4" X 43 1/2" X 48") OR APPROVED EQUAL (SIZE NECESSARY TO MEET MINIMUM VAULT STANDARDS).



ELEVATION

BOX WITH CONCRETE BASE AND DOUBLE CHECK MUST BE SUPPORTED BY POURED IN PLACE CONCRETE PIPE SADDLES OR METAL PIPE STANDS (COATED WITH RUST RETARDANT) COATING.

DATE
MAY 2004
HANOVER
DPU

2" OR SMALLER DOUBLE DETECTOR CHECK ASSEMBLY AND VAULT

DRWG. NO.
FIR-3