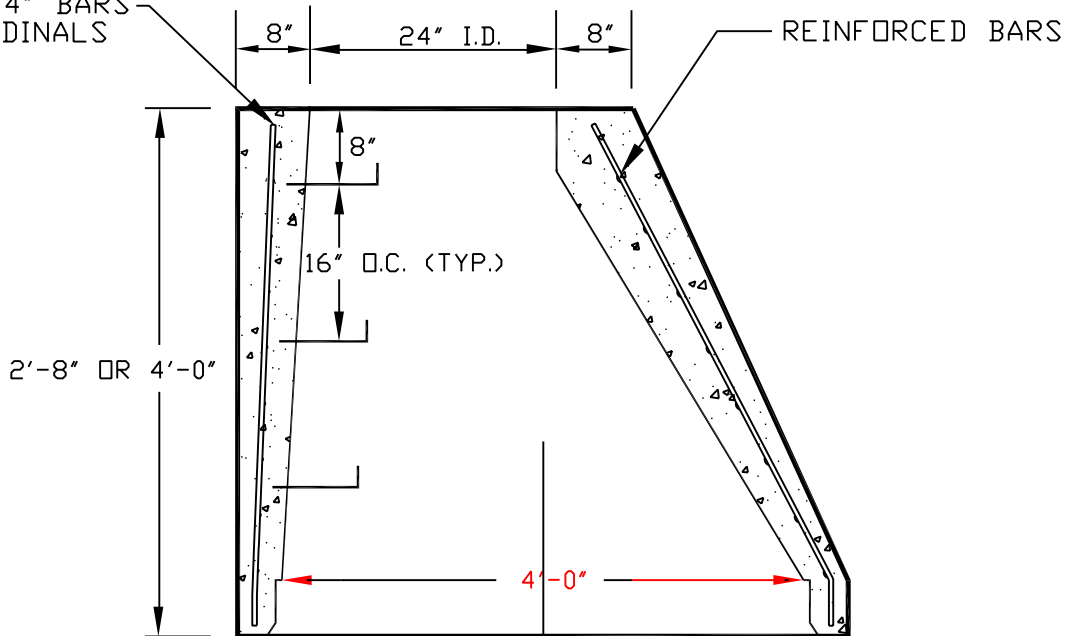


8 ea. -1/4" BARS
LONGITUDINALS



NOTES:

1. CONE SHALL MEET REQUIREMENTS OF ASTM C-478. O-RING GASKET JOINTS MEET REQUIREMENTS OF ASTM C443.
2. CONCRETE SHALL MEET OR EXCEED THE TEST 4000 PSI MINIMUM COMPRESSIVE 28 DAY STRENGTH.
3. APPROVED STEPS SHALL BE EQUAL, SPACED @ 16 INCHES O.C.
4. REINFORCING SHALL BE A MINIMUM .12 IN. ²/FT. (MINIMUM OF 8 EACH - 1/4" BARS ON BACK FACE; & MINIMUM OF 4 EACH - #3 BARS ON FRONT FACE AND W3.4 [5 GAL.] WIRING.)
5. A MAXIMUM OF TWO LIFT HOLES PER SECTION.

DATE
MAY 2004
HANOVER
DPU

STANDARD ECCENTRIC CONE

DRWG. NO.
MAN-8