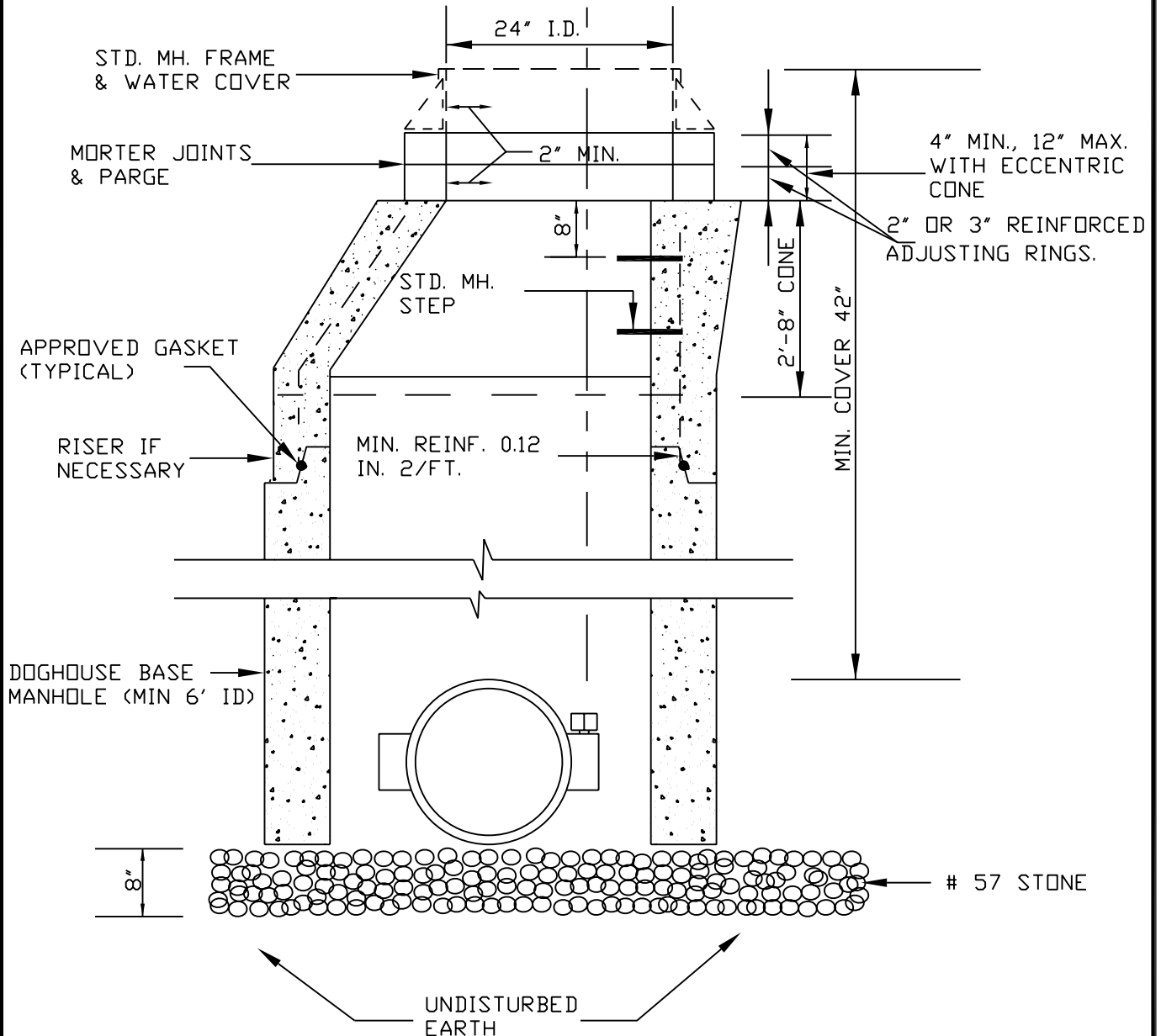


NOTE: MANHOLE IS REQUIRED WHEN VALVE IS LOCATED UNDER PAVEMENT.  
 USE STANDARD VALVE BOX OVER OPERATING NUT FOR OTHER INSTALLATIONS.

A VERTICAL LINE EXTENDING FROM THE VALVE OPERATING NUT SHALL COME NO CLOSER THAN 2" FROM THE EDGE OF THE OPENING.



DATE  
 MAY 2004  
 HANOVER  
 DPU

**STANDARD BUTTERFLY VALVE MANHOLE  
 (16" AND LARGER)**

DRWG. NO.  
**MAN-13**