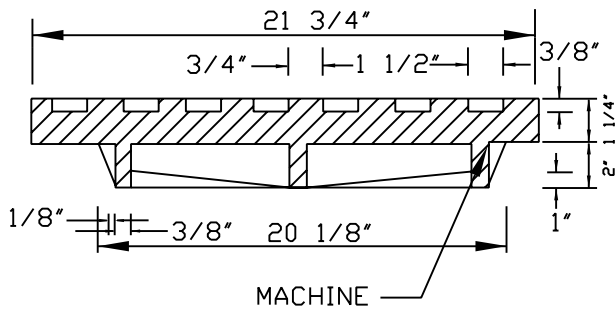
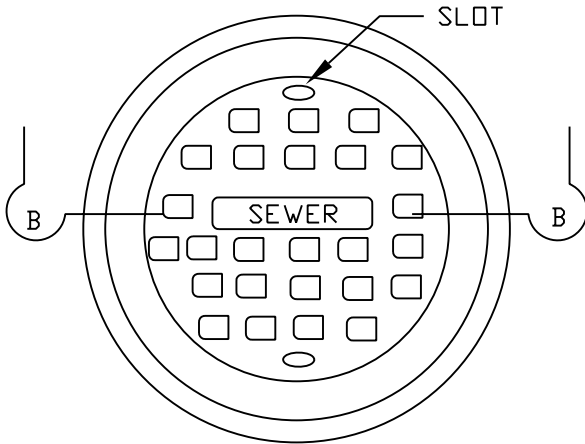
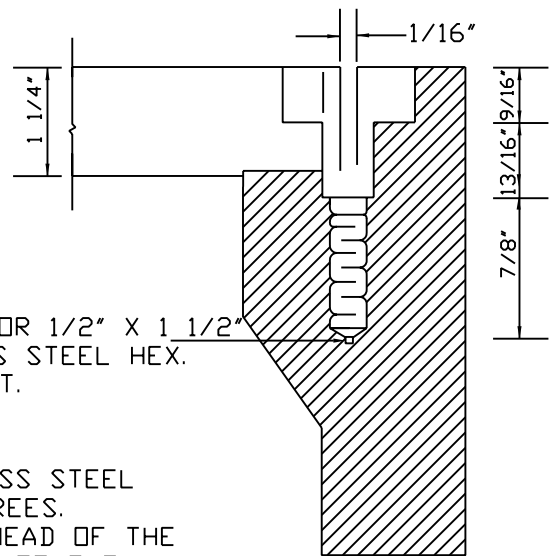


FRAME SECTION



SECT. B-B



TAPPED FOR 1/2" X 1 1/2"
STAINLESS STEEL HEX.
HEAD BOLT.

X-SECT. OF BOLT

NOTE: INSTALL (4) FOUR 1/2" X 1 1/2" STAINLESS STEEL 3/4" HEXAGONAL HEAD BOLTS AT 90 DEGREES. COUNTERBORE THE COVER SO THAT THE HEAD OF THE BOLT IS FLUSH OR JUST BELOW THE TOP OF THE COVER. PENTAGON HEAD BOLTS ARE OPTIONAL.

MANHOLE FRAMES LOCATED ABOVE GRADE SHALL BE ATTACHED TO MANHOLE BY USE OF TWO 1/2" STAINLESS STEEL ANCHOR BOLTS, WEDGE ANCHORS, OR STUD ANCHORS WITH STAINLESS STEEL WASHER AND NUT LOCATED ON OPPOSITE SIDES OF MANHOLE FRAME. HOLES IN MANHOLE FRAME SHALL BE NEATLY DRILLED TO ALIGN WITH ANCHORS.

DATE
MAY 2004
HANOVER
DPU

VANDAL PROOF MANHOLE FRAME & COVER

DRWG. NO.
MAN-18