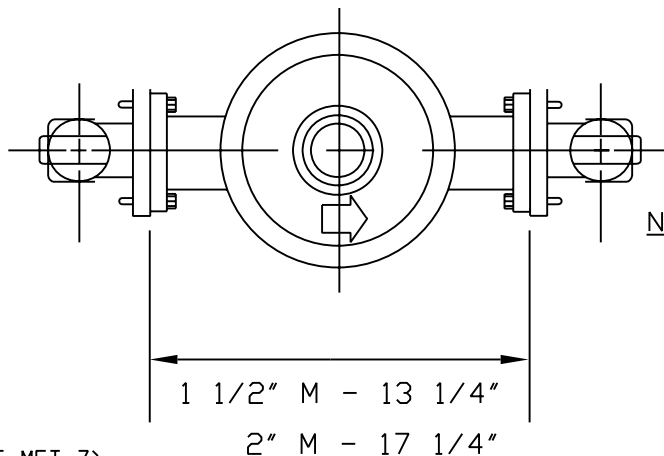
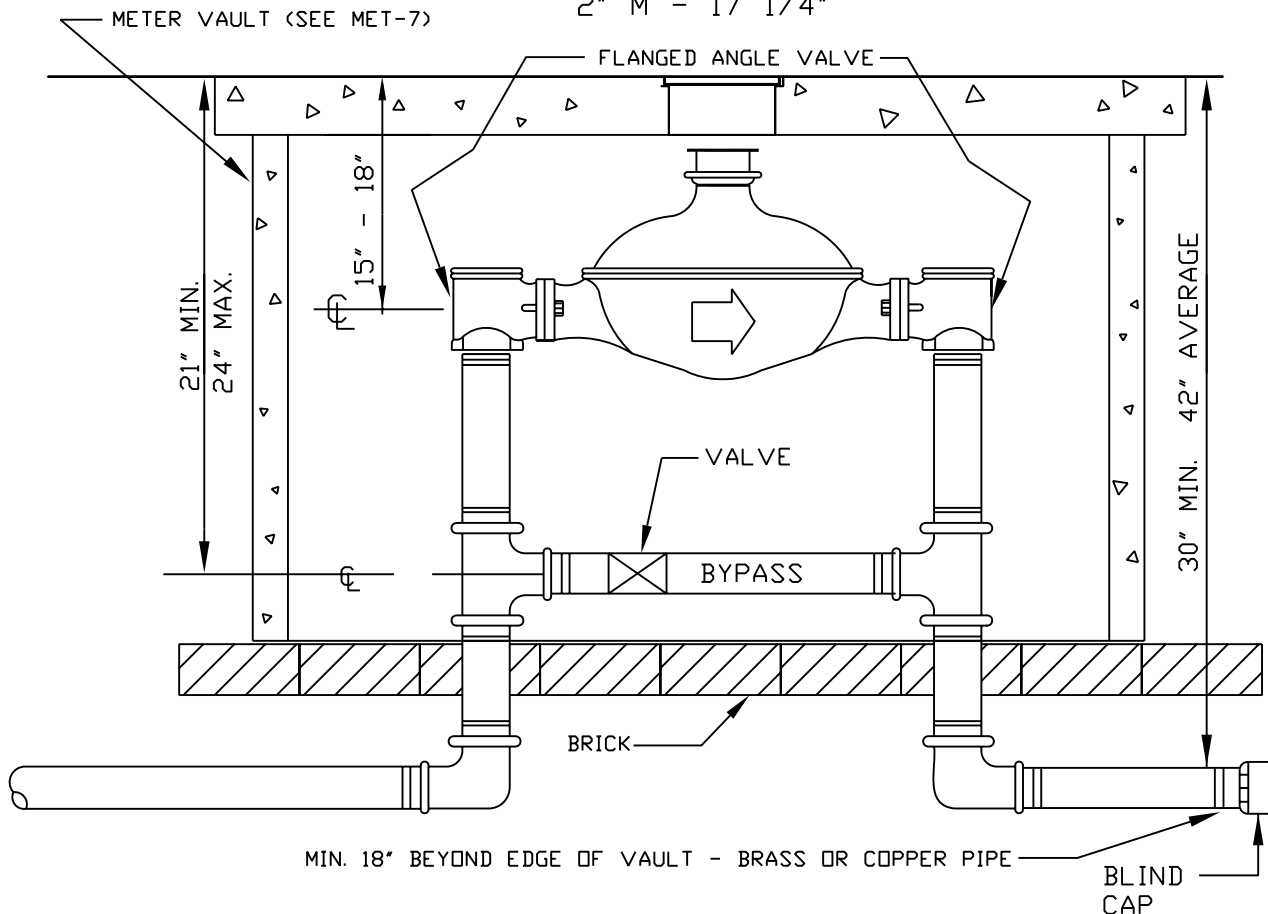


**NOTES:**

1. SADDLES SHALL BE USED FOR ALL TAPS.
2. WATER SERVICE LATERALS FOR 1 1/2" AND 2" SERVICES WILL BE TYPE-K HARD COPPER. CONNECTIONS FOR 1 1/2" AND 2" SERVICES WILL SWEAT 95/5 (LEADLESS) SOLDER AND A SUITABLE FLUX OR APPROVED COMPRESSION FITTINGS. ALL CONNECTIONS AT CORPORATION STOPS WILL BE APPROVED COMPRESSION FITTINGS.
3. TAPS SHOULD BE MADE AT THE SPRING LINE OF THE MAIN LINE.
4. FOR DETAIL OF VAULT, SEE MET-7.



**NOTE:** BYPASS SHALL BE LOCATED ABOVE OR AT FLOOR LEVEL OF METER VAULT.



(DETAIL IS FOR POSITIVE DISPLACEMENT METERS ONLY)

<p>DATE MAY 2004 HANOVER DPU</p>	<p><b>1 1/2" OR 2" METER SETTING</b></p>	<p>DRWG. NO. <b>MET-6</b></p>
--	--	-----------------------------------