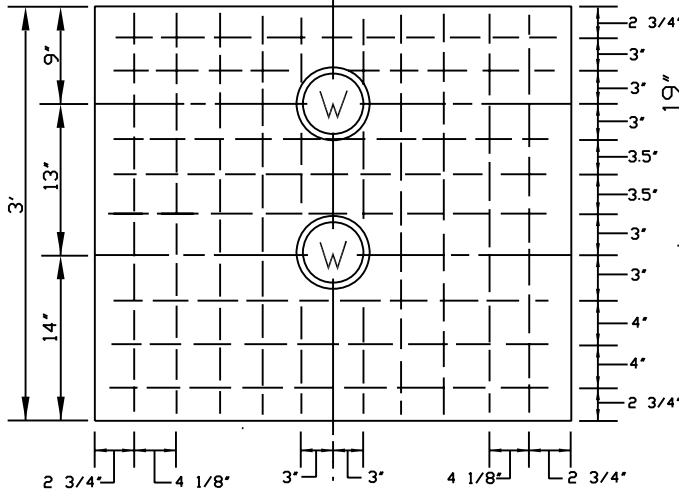
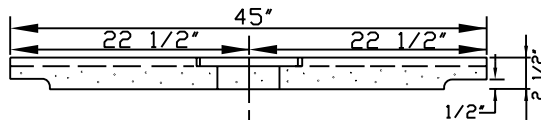


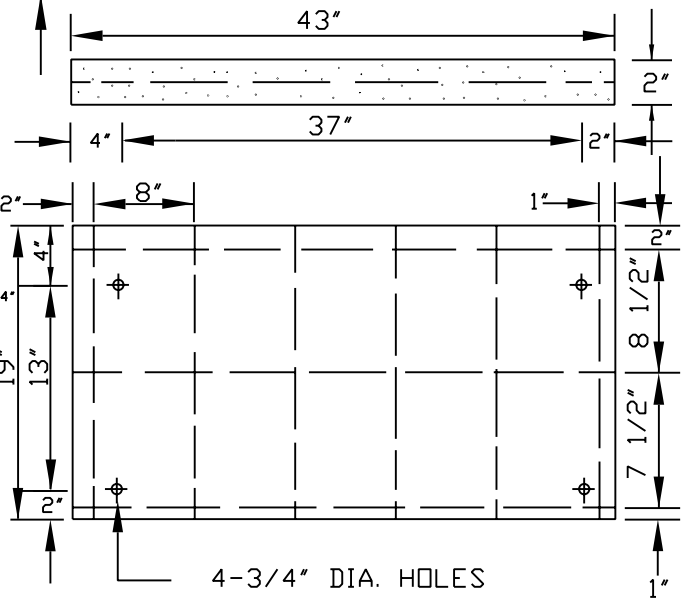
SIDE ELEVATION



VAULT COVER ELEVATION

NOTE:

1. ALL COVER BARS 35" LONG AND OVER TO BE NO. 3, OTHERS NO. 2.
2. ALL BARS TO BE WELDED.
3. ALL BARS TO BE INTERMEDIATE GRADE STEEL AND TO CONFORM TO A.S.T.M. SPECIFICATIONS R-305.
4. VAULT TO BE CONSTRUCTED OF 4000 P.S.I. PRECAST CONCRETE PANELS, REINFORCED AS SHOWN.
5. METER BOX LID OVER METER TO BE PROVIDED WITH A 1-3/4" DIAMETER HOLE.



END PIECE ELEVATION

DATE  
MAY 2004  
HANOVER  
DPU

**3" AND 4" METER VAULT**

DRWG. NO.  
**MET-10**  
SHT. 1 OF 2